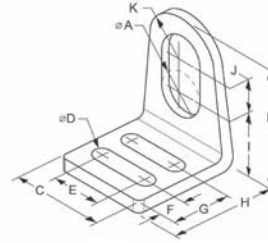


STEEL MOUNTING BRACKETS

Right Angle Brackets

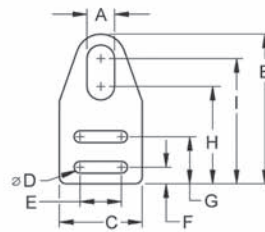


Model #	A	B	C	D	E	F	G	H	I	J	K
HRAB-08	8.10 (0.319)	25.4 (1.00)	31.8 (1.25)	5.54 (0.218)	15.9 (0.625)	7.14 (0.281)	19.0 (0.749)	31.8 (1.25)	9.83 (0.387)	7.62 (0.300)	7.95 (0.313)
HRAB-12	12.1 (0.476)	38.1 (1.50)	38.1 (1.50)		19.1 (0.750)	7.92 (0.312)	22.2 (0.875)	34.8 (1.37)	14.0 (0.555)	12.7 (0.500)	11.4 (0.450)
HRAB-18	18.1 (0.713)	50.8 (2.00)	44.5 (1.75)		25.4 (1.00)				19.1 (0.750)	15.9 (0.625)	15.9 (0.625)
HRAB-30	30.1 (0.319)	63.5 (2.50)	57.2 (2.25)	7.13 (0.281)	34.8 (1.37)	10.3 (0.406)	30.9 (1.22)	44.5 (1.75)	23.0 (0.907)	19.1 (0.750)	21.4 (0.843)

Notes

- 1) Dimensions are in mm(inch).
- 2) Models listed are zinc-plated carbon steel. For 303 stainless steel add "SS" after each model number, for example; HRAB-12-SS.
- 3) Material thickness on 8-18mm models is 1.78(.070), 30mm is 2.16(.095)
- 4) HTM will gladly design, quote and or stock your custom requirements.

Flat Brackets



Model #	A	B	C	D	E	F	G	H	I
HFAB-08	8.10 (0.319)	54.3 (2.14)	31.7 (1.25)	5.60 (0.220)	15.9 (0.625)	7.14 (0.281)	19.0 (0.749)	38.7 (1.25)	46.2 (0.387)
HFAB-12	12.1 (0.476)	69.9 (2.75)	38.1 (1.50)		19.1 (0.750)	7.92 (0.312)	22.2 (0.875)	45.7 (1.80)	58.4 (2.30)
HFAB-18	18.1 (0.713)	82.6 (3.25)	44.5 (1.75)		25.4 (1.00)			50.8 (2.00)	66.7 (2.63)
HFAB-30	30.1 (0.319)	105 (4.11)	57.2 (2.25)	7.24 (0.285)	34.8 (1.37)	10.3 (0.406)	30.9 (1.22)	49.0 (1.93)	61.2 (2.14)

Notes

- 1) Dimensions are in mm(inch).
- 2) Models listed are zinc-plated carbon steel. For 303 stainless steel add "SS" after each model number, for example; HRAB-12-SS.
- 3) Material thickness on 8-18mm models is 1.78(.070), 30mm is 2.16(.095)