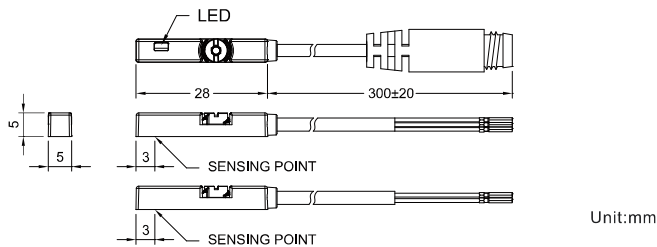
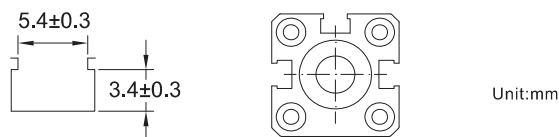


Note: The product images shown may change over time as products are updated.

Dimensions



Groove Dimensions



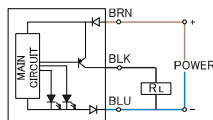
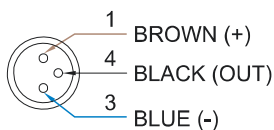
Part Number

PCDS-09/25P-A3U0.3/P8

Features

HTM Sensors Pneumatic Cylinder Sensors are built to provide reliable operation of pneumatic cylinders for motion control applications in any manufacturing environment. Convenient mounting and simple installation are required for successful pneumatic cylinder control, and HTM Sensors provides easy mounting t-slot, c-slot, dovetail and tie-rod mounting profiles to match the design of most commonly used pneumatic cylinders. Protection options are available, including pre-installed silicone, Kevlar or fiberglass jackets to keep machines running in rough environments.

Connection



Technical Data

Body Style	Direct Mount
Mounting Style	T-Slot
Magnet Requirement (*2)	50 Gauss
Output Type	PNP
Output Function	Normally Open
Connection	Quick Disconnect
Connector Type	M8 3-pin
Operating Voltage	10-28V DC
Switching Frequency	1 KHz
Operating Temperature	-10 °C - +60 °C
Current Consumption	-10 mA @ 24V DC max
Contact Rating (*1)	2W max
IP Rating	IEC 60529 IP67
Vibration Rating (*4)	9G
Shock Rating (*3)	50G
Short Circuit Protected	Yes
Reverse Polarity Protected	Yes
Max Current	80 mA
Leakage Current	0.05 mA max
Weld Field Immune	No
Weld Spatter Resistant	No
Body Dimensions (mm)	5 x 5 x 28

NOTE:

1. WARNING: Never exceed rating (Watt=Voltage x Amperage). Permanent damage to sensor will occur.
2. Measuring standard target: $\varnothing 15.5 \times \varnothing 8 \times 5t$ (Anisotropy rubber magnet)
3. Sin wave / X, Y, Z 3 directions / 3 times each direction / 11 ms each time.
4. Double amplitude 1.5 mm / 10 Hz~55 Hz~10 Hz (Sweep 1 min.) / X, Y, Z 3 directions / 1 hour each time.



In the USA: 1889 Maryland Ave., Niagara Falls, NY 14305
 In Canada: 3419 Mainway, Burlington, ON L7M 1A9
 Toll Free: 1-800-644-1756 • Fax: 888-283-2127
 service@htmsensors.com