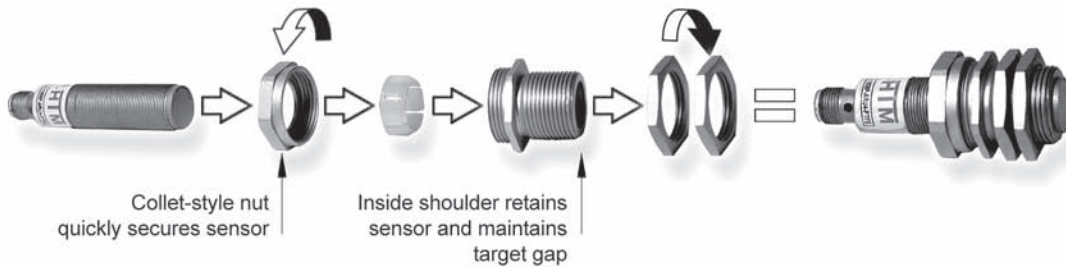


QUICK RELEASE COLLARS

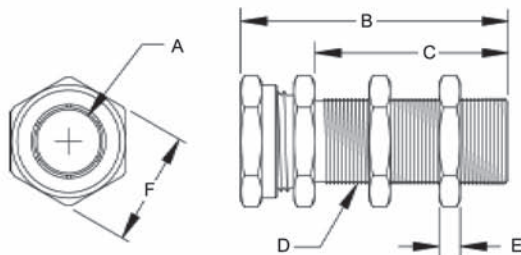


Quickly and Securely Install Sensors with a Simple Twist Features

- * Collet-style locknut secures sensor
- * Integral stop shoulder maintains target gap
- * 8,12,18 and 30mm sizes
- * Short & long barrel lengths
- * Housing protects sensor from physical impact
- * Fast sensor change-out with no adjustment needed
- * PTFE coated models repel weld spatter



Models	PTFE Coated	A	B	C	D	E	F
HQT-08	HQT-08-T	8.18	32.4 (1.28)	17.5 (0.69)	M12 x 1	3.85 (0.15)	16.9 (0.67)
HQT-08L	HQT-08L-T	(0.32)	48.0 (1.93)	34.0 (1.34)			
HQT-12	HQT-12-T	12.1	33.7 (1.34)	19.5 (0.77)	M16 x 1	4.01 (0.16)	21.8 (0.86)
HQT-12L	HQT-12L-T	(0.48)	44.8 (1.76)	30.0 (1.18)			
HQT-18	HQT-18-T	18.1	38.5 (1.52)	20.0 (0.79)	M24 x 1.5	4.95 (0.19)	30.0 (1.18)
HQT-18L	HQT-18L-T	(0.71)	58.0 (2.28)	40.0 (1.57)			
HQT-30	HQT-30-T	30.1	35.0 (1.50)	20.0 (0.79)	M36 x 1.5	6.13 (0.24)	41.0 (1.61)
HQT-30L	HQT-30L-T	(1.19)	58.0 (2.28)	40.0 (1.57)			



Smart Rest Pad

Use Quick Release Collars as a "smart rest pad" for tooling and fixturing. With sensors protected by Quick Release Collars you can rest castings or work pieces right on your sensors. Quick Release Collars can take the load and adjustments are easy via the threaded housing. Sensors confirm part positioning to initiate machining, welding or other control cycles.

